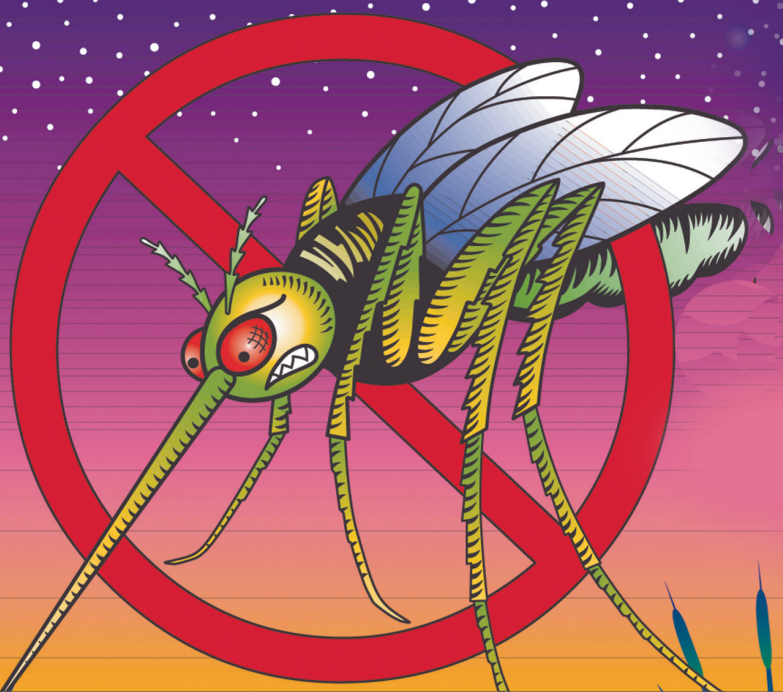


# FIGHT THE BITE!



## What is the Sutter-Yuba Mosquito & Vector Control District doing to protect the residents of Sutter & Yuba Counties?

The District has expanded its control program to treat over 140,000 acres of rice fields for mosquito larvae in 2008. We will also start spraying adult mosquitoes by ground and aircraft earlier than normal. Work in agricultural areas will start in late May and town spraying will start Wednesday July, 2nd. We have increased our community outreach efforts. The District Board has approved additional funds for these expanded services to fight WNV.

## What are the facts?

We are prepared to respond to West Nile virus and other mosquito-borne diseases and we'll be more successful in our efforts with the public's help. Fortunately, the disease risk for residents is small. Even in a virus outbreak, fewer than 1 in 100 mosquitoes are carriers of the virus and fewer than 1 in 150 people who become infected with the virus will develop a serious illness. Our District follows an Integrated Pest Management (IPM) program that is an ecosystem based strategy. It focuses on long term prevention of mosquitoes through a combination of techniques such as biological control, habitat manipulation, and pesticides. Pesticides are used only after monitoring indicates they are needed according to established guidelines, and treatments are made with the goal of eradicating only mosquitoes. Pesticides are selected and applied in a manner that minimizes risk to human health, beneficial and non-target organisms, and the environment.

## Will the District conduct spraying for mosquitoes?

West Nile virus was established in Sutter & Yuba counties in 2004. We had 3 human cases of WNV in Sutter and no cases in Yuba County in 2007. There were 25 mosquito collections and 25 sentinel chickens that tested positive for WNV. There were no horses with confirmed WNV in Sutter & Yuba counties last season. The District plans a pro-active approach to mosquito control for 2008 in light of the continued WNV threat. The treatment of both mosquito larvae and adults will start earlier, targeting the first generation of the season. Town spraying will be performed on Wednesday evenings from truck-mounted, ultra low volume foggers starting at dusk. Spraying should last no longer than 2 1/2 hours. This will target the peak flight time of the WNV mosquito vector. Please refer to the "Clip and Save" spray schedule box.

## What pesticides will we use?

In the case of adult mosquito control we will use botanical insecticides (plant derived compounds) that include pyrethrins or synthetic pyrethroids, with piperonyl butoxide. All the products we use are approved by the Environmental Protection Agency and applied according to label directions by our trained and certified technicians. Bti will be used for larval control in rice fields.

## What risks are there to the residents of Sutter & Yuba Counties?

The risks to the public and to the environment are very low. Mosquito adulticides are applied as ultra low volume (ULV) sprays. ULV applications involve small quantities of active ingredient in relationship to the size of the area treated, typically 1 ounce per acre, which minimizes exposure and risk to people and the environment. For example, the EPA has estimated the exposure and risk to both adults and children posed by ULV aerial and ground applications of insecticides. For all the exposure scenarios considered, exposure ranged from 100 to 10,000 times below an amount of pesticide that might pose a health concern.

# Protect Yourself and Your Family From West Nile Virus

## Should I take steps to reduce exposure to pesticides during mosquito control spraying?

Generally, there is no need to relocate during mosquito control spraying. The pesticides we will be spraying have been evaluated for this use. Their use poses minimal risks to human health and the environment even when human exposure may occur when used according to label directions. Although mosquito control pesticides pose low risks, some people may prefer to avoid or further minimize exposure. We will avoid spraying organized outdoor activities such as little league, softball and soccer. Some common sense steps to help reduce possible exposure to pesticides include:

- ❖ Pay attention to the Appeal-Democrat and local TV and radio for announcements about spraying and remain indoors during applications in the immediate area.
- ❖ People who suffer from chemical sensitivities or feel spraying may aggravate a pre-existing health condition may consult their physician or local health department and take special measures to avoid exposure.
- ❖ Close windows and turn off window-mounted air conditioners and evaporative coolers when spraying is taking place in the immediate area. Since the effects of ground and aerial spraying dissipate in about an hour it is not necessary to wash off outdoor furniture or playground equipment before use. Please contact our office if you have questions or concerns about our spray program.

## What can you do to reduce your risk of contracting West Nile virus?

Everyone plays a crucial part in helping to reduce the risk of contracting West Nile virus and other mosquito-borne diseases. The most important activity you can do to help us "Fight the Bite" is to:

- ❖ Eliminate standing water on your property where mosquitoes may breed. Hundreds of mosquitoes can breed in just a tablespoon of water. They can breed in anything that holds standing water for more than 4 or 5 days, such as dirty swimming pools, backyard ornamental ponds, discarded tires, clogged rain gutters, pool and boat covers, bird baths, cans, buckets and many other containers.
- ❖ Report foreclosed homes with dirty swimming pools to the District.
- ❖ Report dead birds. Call the WNV hotline toll free at 1-877-WNV-BIRD (1-877-968-2473).
- ❖ Repair window and door screens to prevent mosquitoes from entering homes and businesses.
- ❖ Wear long sleeves and pants if you have to be outdoors when mosquitoes are present. Peak biting activity is typically at dusk and dawn.
- ❖ Use a repellent containing the ingredient DEET, 10 percent or less of DEET is recommended for children and 30 percent is recommended for adults. The EPA has recently added the active ingredients Picaridin and oil of Lemon Eucalyptus as effective repellents.
- ❖ Visit our District office to get FREE mosquitofish for ornamental ponds, horse troughs and other sources that hold water for extended periods of time. The District office is located at 701 Bogue Road, Yuba City, CA. Our hours of operation are 7-3:30 M-F. Please bring a container, such as a small ice chest, to take home your mosquitofish.
- ❖ Report mosquito sources and problems in your neighborhood.

LEARN ABOUT WEST



NILE VIRUS NOW!

[www.sutter-yubamvcd.org](http://www.sutter-yubamvcd.org)

## CLIP N SAVE

### PLEASE REMEMBER OUR SPRAY SCHEDULE

### Sutter-Yuba Mosquito & Vector Control District

**ON MONDAYS & THURSDAYS AT DUSK,** agricultural ground fogging for rural areas in the District. Does not include Yuba Co. foothills.

**ON TUESDAYS AND WEDNESDAYS AT DUSK,** aerial spraying for agricultural areas north of Marysville and west of Yuba City.

**ON WEDNESDAYS AT DUSK,** town fogging for Wheatland, Olivehurst, Linda, East Marysville, Meridian, Live Oak, Sutter, Tierra Buena, Robbins and Plumas Lake.

Stay alert for further information regarding additional spraying.  
[www.sutter-yubamvcd.org](http://www.sutter-yubamvcd.org)

**530-674-5456**