

SAFE PRACTICES

RNA Preservation Card Sampling of Dead Birds for West Nile Virus Testing

A Tutorial for Local Agencies

Presented by: The California Department of Public Health
Vector-Borne Disease Section
West Nile Virus Dead Bird Surveillance Program



RNA preservation card sampling of dead birds for West Nile virus testing

This tutorial explains and illustrates safety protocols for obtaining dead bird oral swab samples.

By following these protocols, you can minimize your risk of potential exposure to West Nile virus.



DEAD BIRDS CAN CARRY WNV



There is a risk of West Nile virus (WNV) transmission when working with dead birds:



Sharp beaks can puncture skin



**Fluids from the mouth or cloaca may
carry virus**



Virus may be on the feathers and body



Virus can be aerosolized and potentially inhaled

Safety Precautions

- Avoid touching the carcass with bare hands.
- Pick up the dead bird by inverting a plastic bag over your hand, or wear gloves.
- Double-bag the bird and tie or seal.



Where to work?

If your lab does not have a biological safety cabinet (BSC), the bird can be handled in the field with appropriate protection.

If your lab has a BSC, transport the bird to the laboratory to work in the BSC.



Work in BSC

OR



Work outdoors wearing N-95 mask

OUTDOOR SAMPLING

To sample birds for RNA preservation cards in the field, you must wear an N-95 mask and work in a well-ventilated area.

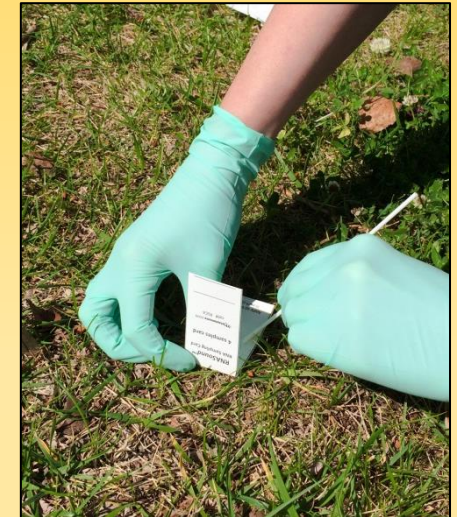
1. You will need: **N-95 mask, disposable gloves, sterile swabs, RNA preservation cards, and a permanent pen or pencil.**
2. Label RNA preservation card with dead bird #. Put on mask and gloves. Isolate the bird's head, and partially unwrap the polyester swab. Pry open the bird's beak and hold open with one hand. With other hand, remove the swab from its wrapping. Aggressively swab the oral cavity and throat area.



A partially unwrapped swab

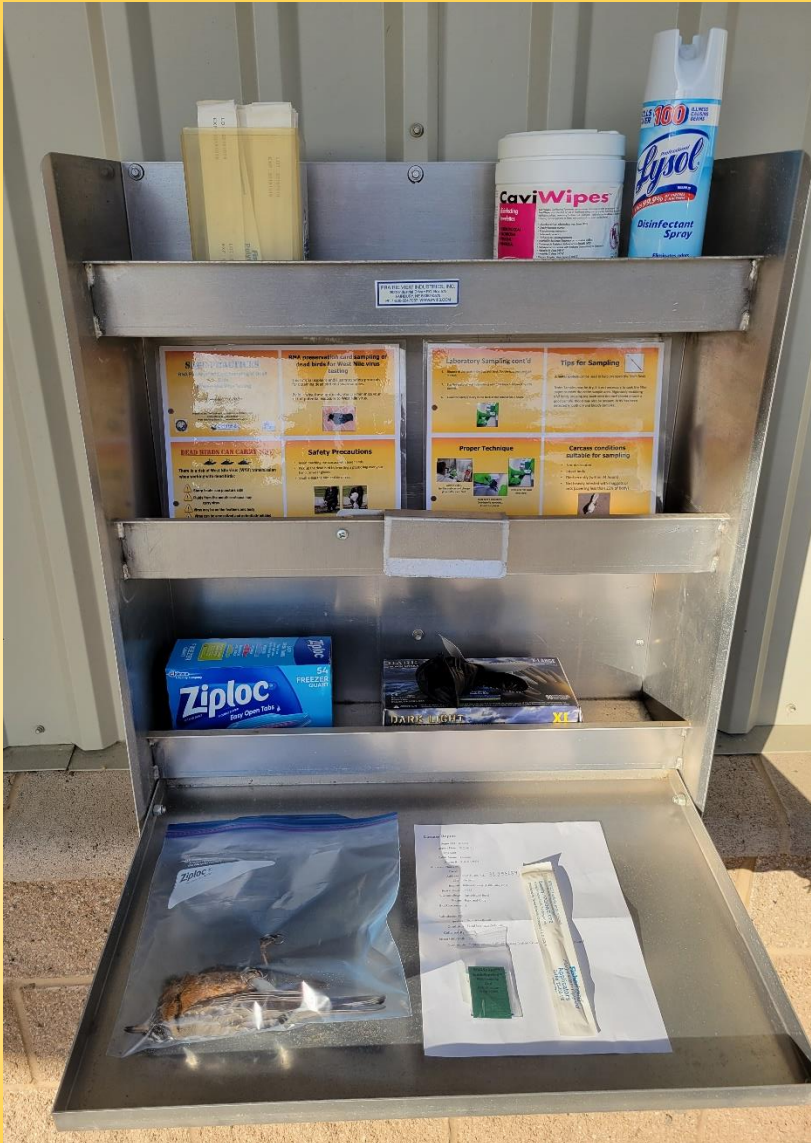
Outdoor Sampling cont'd

3. Roll and press the swab onto RNA preservation card within the sample ring area, over the pre-punched discs.
4. Place the swab and used gloves in the bag with the bird. Seal the inner and outer bags and throw the bird away in an outdoor trash can.
5. Discard the N-95 mask. Wash hands with soap and water.
6. Do not touch the card's sampling area. Allow sample to dry (2 hours). A clipboard can be used to hold the dead bird form and open card.
7. After drying 2 hours, close the card's flap. The card is ready to be mailed to DART (UC Davis Arbovirus Research and Training Laboratory) for analysis.



Press and roll swab
onto card

Outdoor Sampling cont'd



Example of an outdoor sampling station. The fold-out shelf is convenient, and the metal surfaces can easily be sterilized.

LABORATORY SAMPLING



You can also work in a biological safety cabinet to sample dead birds.

1. You will need: **disposable gloves, sterile swabs, RNA preservation cards, metal spatula, permanent pen, 10% bleach, and 70% alcohol in spray bottles.**
2. Label RNA preservation card with dead bird number.
3. Wear disposable gloves and change gloves between birds.
4. Isolate only the bird's head from the bag.
5. Swab the bird's oral cavity and press on RNA preservation card as described previously.

Laboratory Sampling cont'd

6. Dispose of the swab in the bag with bird. Double-bag, seal, and put in trash.
7. Sterilize surfaces and instruments with 10% bleach followed by 70% alcohol.
6. Allow the card(s) to dry in the back of the cabinet for 2 hours.



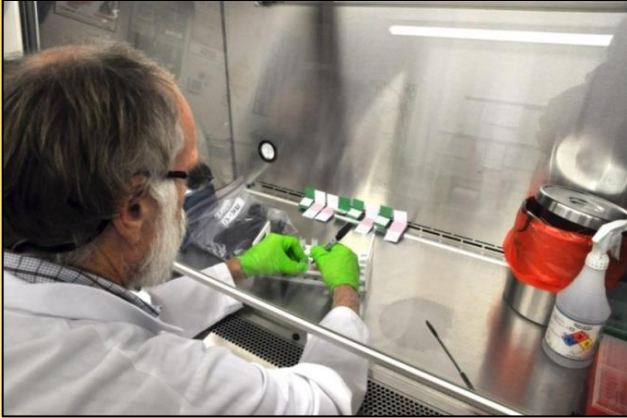
Tips for Sampling



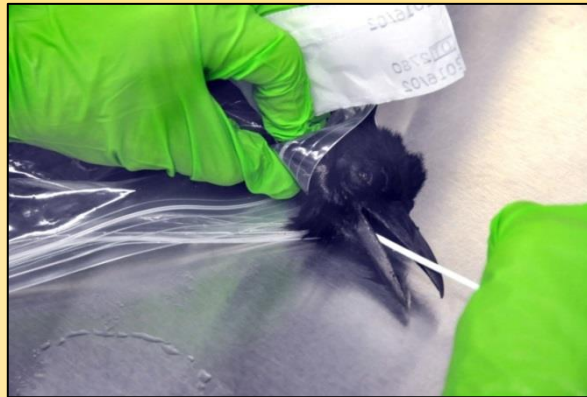
A **metal spatula** can be used to help pry open the bird's beak.

Note: Samples may be dry. It is not necessary to soak the filter paper or cover the entire sample area. Vigorously swabbing and firmly pressing the swab onto the card should ensure a good sample. Blood may also be present. WNV has been detected in both dry and bloody samples.

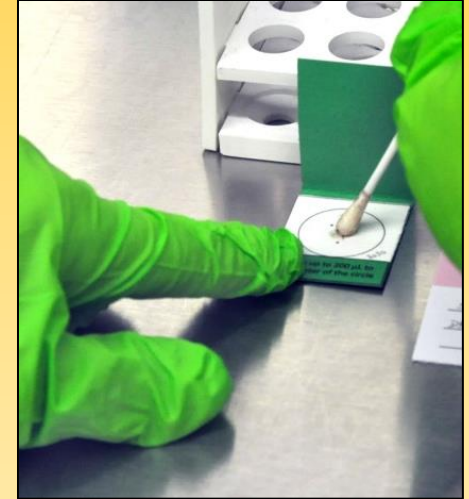
Proper Technique



Work in a BSC.
Sterilize surfaces and change
gloves after each bird.



Swab bird's oral cavity.
Only head is removed.
Avoid sharp beak.



Press and roll swab
onto card.

Purchasing Information

RNA preservation cards

RNASound ReadyPunched™ cards can be ordered in packages of 10 or 25 online at the Fortius Bio LLC website.

<https://www.fortiusbio.com/products/perforated-rna-sampling-cards>

Polyester swabs

Swabs must be synthetic (not cotton), with a long handle. For example: Fisherbrand® product #22-029-682.

Where to mail cards

Ship overnight to DART (UC Davis Arbovirus Research and Training Laboratory):

when shipping via GLS:

ATTN: Anil Singapuri

UC Davis, Dept. of PMI

1285 Veterinary Medicine Mall

Building: Vet Med 3A, Room 3336

Davis, CA. 95617

when shipping via other carriers:

ATTN: Anil Singapuri

Vet Med 3A, Room 3336

1285 Veterinary Medicine Mall

University of California, Davis

Davis, CA 95616

Or: to save costs, seal all cards in another ziplock bag and add to your mosquito box if you send mosquitoes to DART for WNV testing.

Test Results

RNA preservation cards will be tested by RT-PCR at the UC Davis Laboratory in batches of 10 to 12.

Results are entered into Gateway. You should receive an automatic email with test results as soon as they are entered.

Turnaround time is typically 2-7 days during the regular season and ~3 weeks in winter.

MORE INFORMATION



WestNile.ca.gov
VECTOR-BORNE DISEASE SECTION • CA DEPT OF PUBLIC HEALTH

The WNV website's "Response Plans and Guidelines" section contains more information, including the oral swab sampling protocol.

